






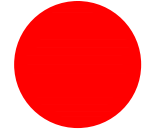
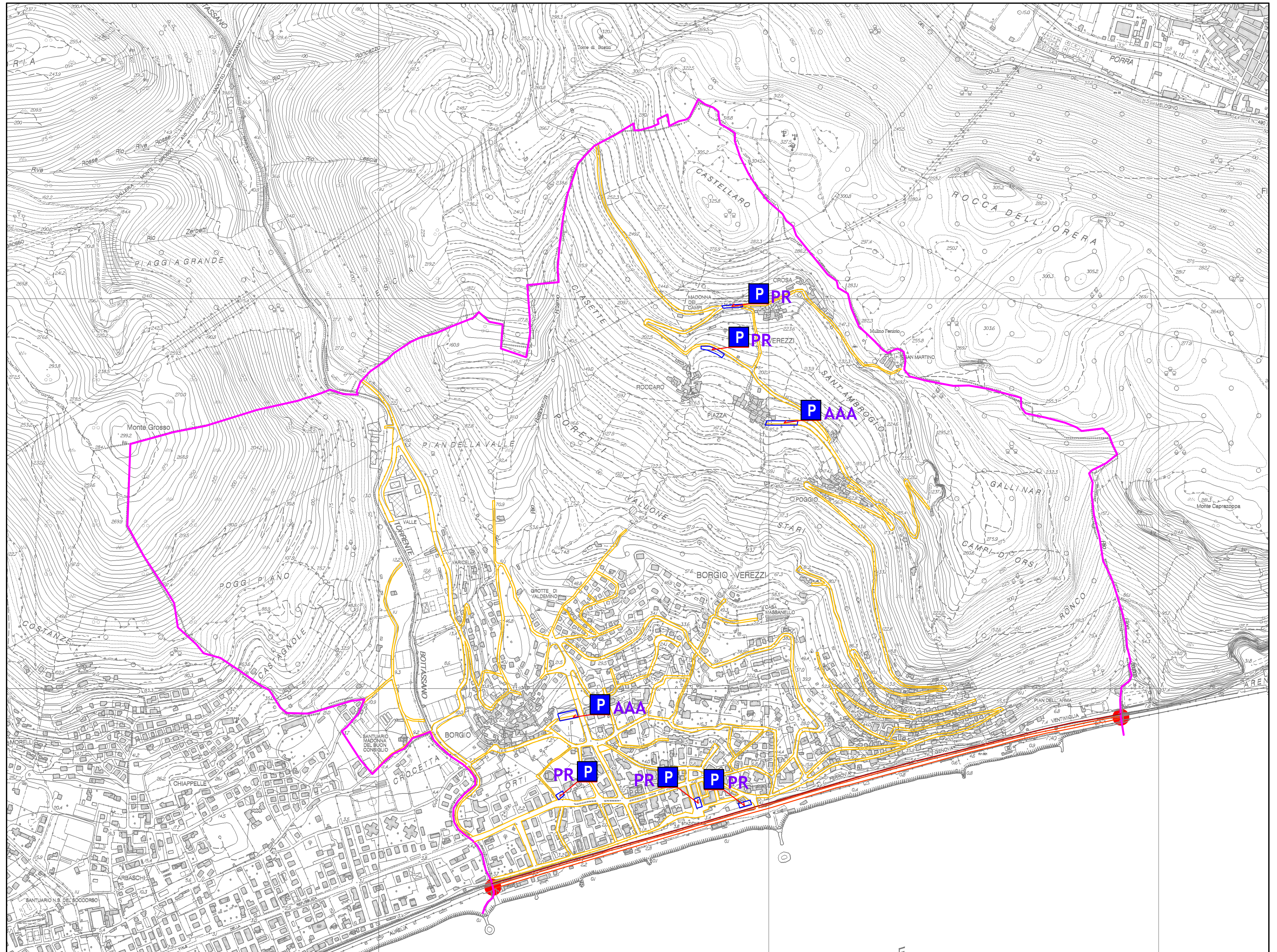
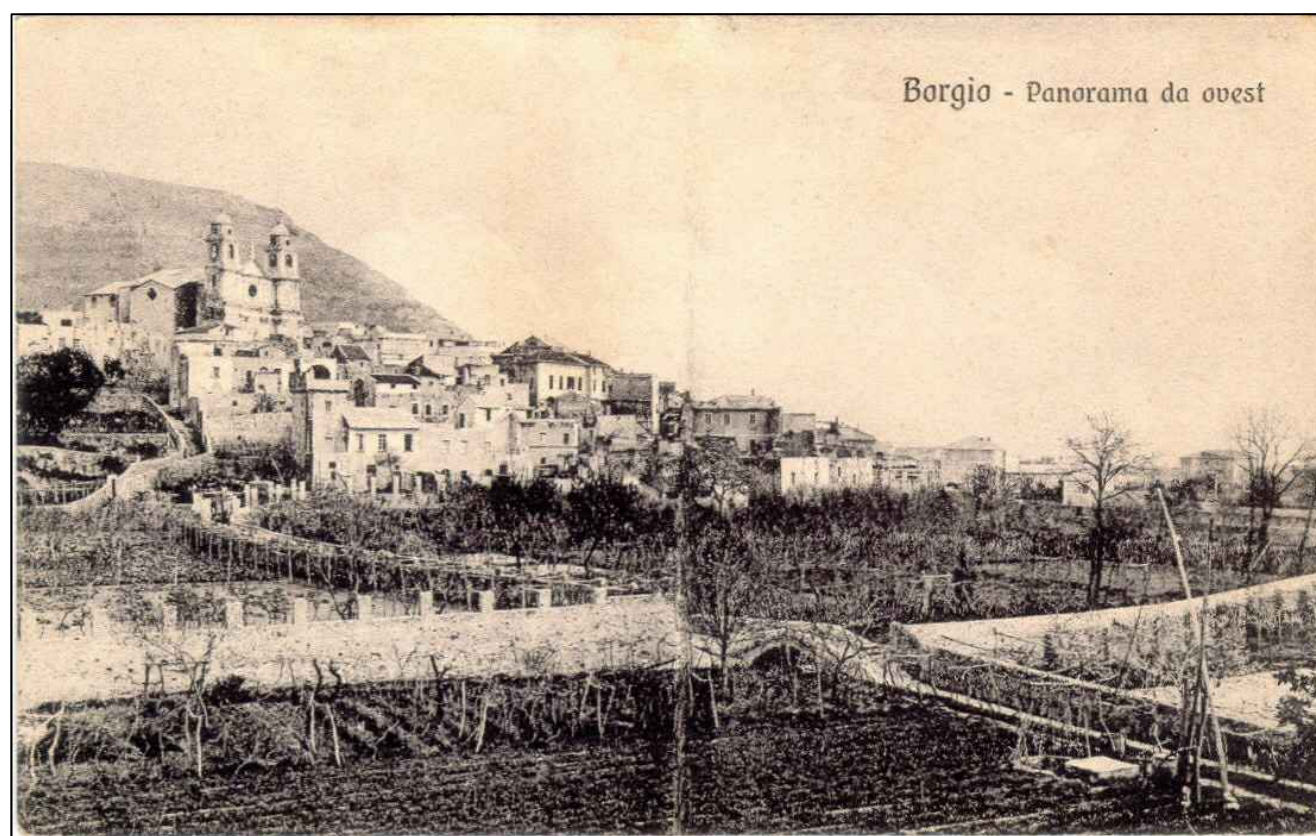


LEGENDA

-  Limite confine comunale
-  Rete viaria principale preferenziale
-  Rete viaria secondaria preferenziale
-  Rete ferroviaria
-  Aree parcheggio
 -  Aree attrezzabili aperte
 -  Punti di raccolta
-  Cancelli ubicati in corrispondenza degli accessi viari preferenziali



COMUNE DI BORGIO VEREZZI



PIANO DI EMERGENZA COMUNALE (NORME DI PROTEZIONE CIVILE)

OGGETTO CARTA DELLA VIABILITA' E DELLE AREE PARCHEGGIO AD USO PROTEZIONE CIVILE	DATA Ottobre 2015	TAVOLA N° 7
	SCALA 1:5000	
IL RICHIEDENTE AMMINISTRAZIONE COMUNALE DI BORGIO VEREZZI	TIMBRO	
IL PROGETTISTA Dott. Geol. Flavio Saglietto Via Matteotti 5 17022 Borgio Verezzi Tel 019/625670		